

# Saffire 22 Lumi by ABC Homes



FROM\* \$508,262

Floorplan and standard specification shown. Floorplan may not reflect developer guidelines. Price excludes landscaping, fencing and pathway.

## House and Land Package

✂ 448m<sup>2</sup> Land Size

Lot 1401 | Frontage 16<sup>m</sup>

Package Price \$508,262\*

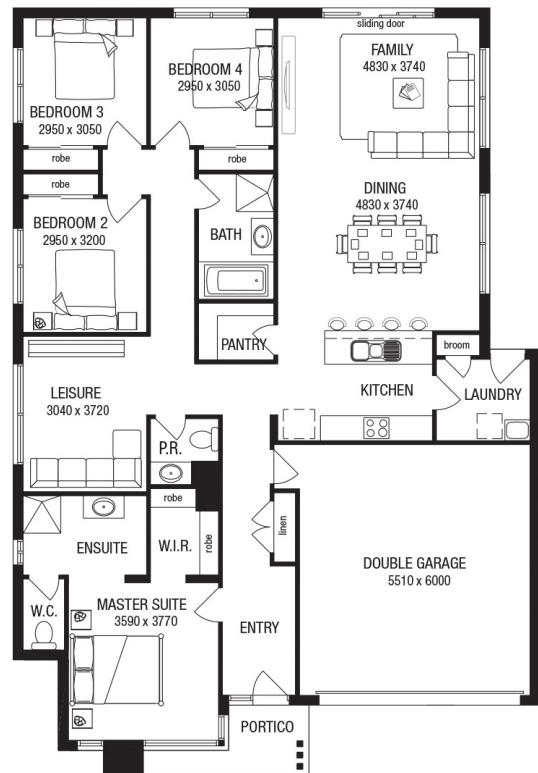
\*Price based on standard floor plan and façade. Image depicts items not included in the price.

## Saffire 22 Lumi



### Inclusions List

- ✓ Fixed Site Costs
- ✓ Council and Developer Guidelines
- ✓ Stainless steel 600mm kitchen appliances
- ✓ Stainless steel 600mm rangehood
- ✓ Timber look flooring to entry, dining, kitchen & family areas
- ✓ Carpet to all bedrooms (excluding wet areas)
- ✓ Gas ducted heating



#### DISCLAIMER

\*Package price excludes external lighting, telephone service, customer account opening fees, stamp duty on land, legal fees and conveyancing costs including titles and property report.  
 \*Carpet and timber laminate Category 1 selection from ABC's set of colour scheme selections.  
 Australian Building Company reserves the right to alter the images or descriptions without notice.  
 See [abchomes.com.au](http://abchomes.com.au) for full details of standard inclusions and/or terms and conditions. All home & land packages are subject to developer approval. Land prices and availability are subject to change without notice. Image shown depicts standard options included which differ from standard floorplan. Newfield Real Estate Pty Ltd (ACN 159 312 722), Licence number 028051L  
 Price Region: Greenfields CDB-U 52968