

# Olinda 20 Cove



## House and Land Package

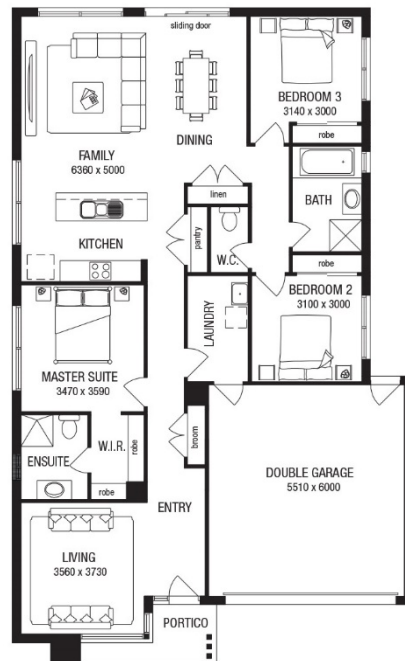
✂ 421m<sup>2</sup> Land Size

Lot 1508 | Frontage 10.3m CNR

Package Price \$521,800\*

\*Price based on standard floor plan and façade.  
Image depicts items not included in the price.

### FLOOR PLAN



## Olinda 20



✂ 20.14sq

### Inclusions List

- Stylish laminate flooring to entry, kitchen, family and dining<sup>^</sup>
- Stainless steel oven
- Stainless steel glass canopy range hood
- Stainless steel cooktop

*Floor plan and standard specification shown. Floor plan may not reflect developer guidelines*

For more information

talk to **Jason De Felice** on **0422 364 122**

or go to [abchomes.com.au](http://abchomes.com.au)

#### DISCLAIMER

PACKAGE PRICE EXCLUDES EXTERNAL LIGHTING, TELEPHONE SERVICE, CUSTOMER ACCOUNT OPENING FEES, STAMP DUTY ON LAND, LEGAL FEES AND CONVEYANCING COSTS INCLUDING TITLES AND PROPERTY REPORT. \*CARPET AND TIMBER LAMINATE CATEGORY 1 SELECTION FROM ABC'S SET OF COLOUR SCHEME SELECTIONS. AUSTRALIAN BUILDING COMPANY RESERVES THE RIGHT TO ALTER THE IMAGES OR DESCRIPTIONS WITHOUT NOTICE. SEE [AUSTRALIANBUILDINGCOMPANY.COM.AU](http://AUSTRALIANBUILDINGCOMPANY.COM.AU) FOR FULL DETAILS OF STANDARD INCLUSIONS AND/OR TERMS AND CONDITIONS. ALL HOME & LAND PACKAGES ARE SUBJECT TO DEVELOPER APPROVAL. LAND PRICES AND AVAILABILITY ARE SUBJECT TO CHANGE WITHOUT NOTICE. NEWFIELD REAL ESTATE PTY LTD (ACN 159 312 722), LICENCE NUMBER 028051L. PACKAGE PRINTED DATE: 19/10/2016 PRICE REGION: GREENFIELDS